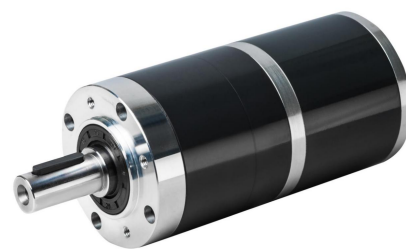
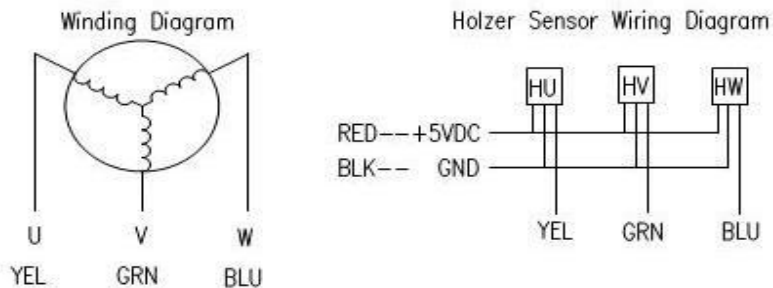
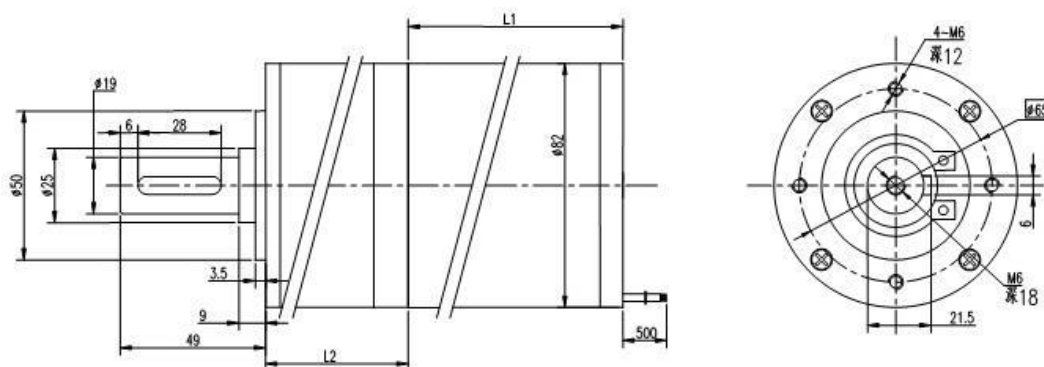


## Wiring Diagram



## Appearance Size &amp; Motor Installation



## Motor Electrical Specification

Motor Model	DG825-188W
Rated Voltage(VDC)	48
Rated Speed(Rpm)	3000
Rated Torque(N.m)	0.6
Rated Power(W)	188
L1 Length(mm)	93

## Gearbox Electrical Specification

Reducer Series	1	2
Transmission efficiency	95%	90%
Max radial load	1000N	1000N
Max axial load	500N	500N
Transmission torque	50N.m	80N.m
Reduction Ratio	5,10	15,20,25,30,40,50
L2 Length(mm)	58	77

\* Note: We can manufacture products according to customer's requirements.  
Optional accessory is the encoder and brake to match this product.

\* Contact [sales@ichmo.com](mailto:sales@ichmo.com).